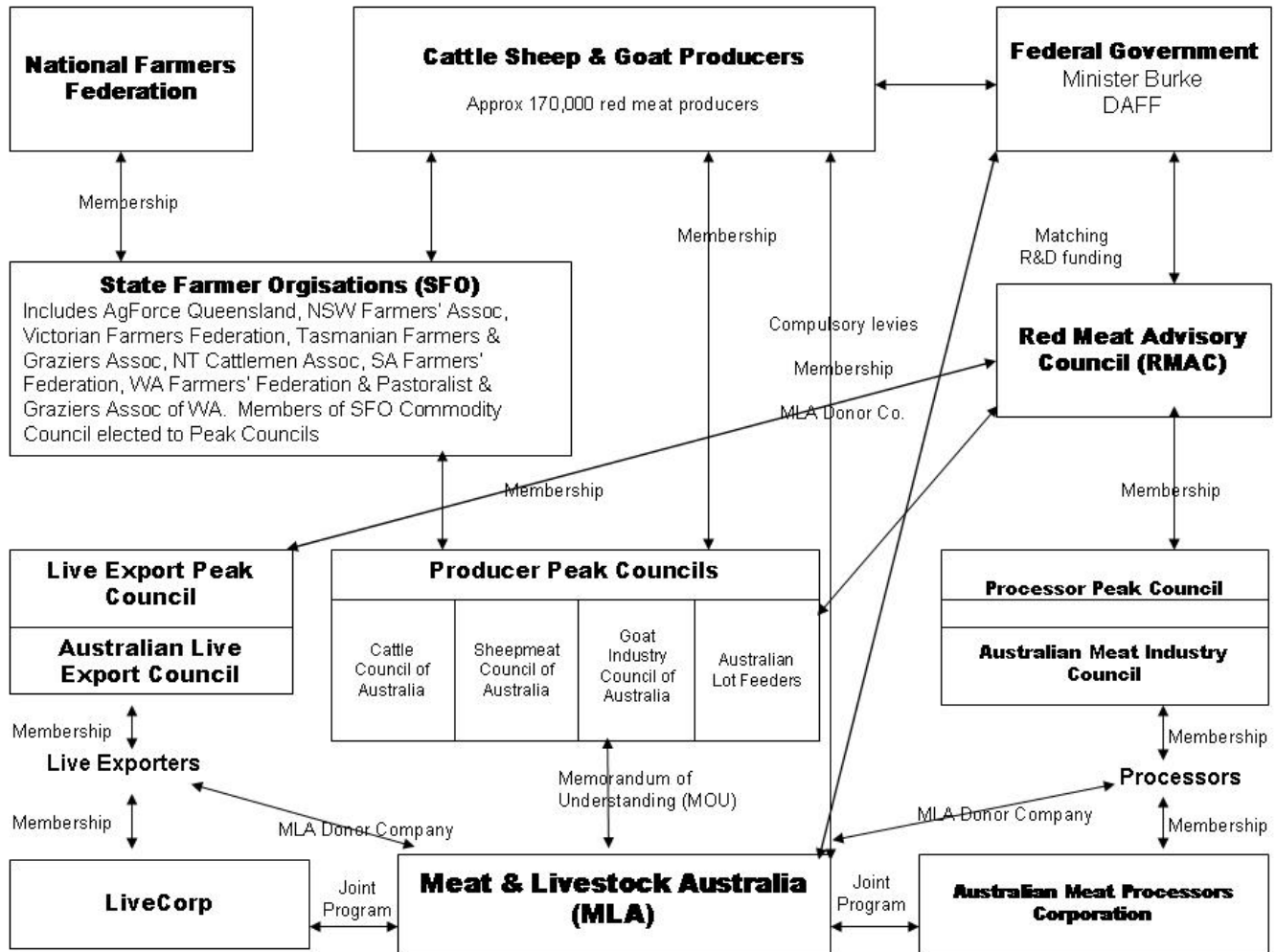


The Australian Red Meat Industry – Associated Organisations



Peak Councils

Cattle Council of Australia (CCA)

Peak producer organisation representing Australia's beef cattle producers.

<http://www.cattlecouncil.com.au/>

Sheepmeat Council of Australia (SCA)

Peak body representing and promoting the national and international interests of lamb and sheepmeat producers in Australia.

<http://www.sheepmeatcouncil.com.au/>

Goat Industry Council of Australia (GICA)

Peak national body representing the interests of goat producers.

<http://www.gica.com.au/>

Australian Lot Feeders' Association (ALFA)

Peak national body for the feedlot industry in Australia.

<http://www.feedlots.com.au/>

Australian Meat Industry Council (AMIC)

Peak Council that represents retailers, processors, exporters and smallgoods manufacturers in the post-farm-gate meat industry.

<http://www.amic.org.au/>

Industry Organisations

Australian Livestock Export Corporation Ltd (LiveCorp)

A not for profit industry body owned and funded through contributions by livestock exporters.

<http://www.livecorp.com.au/>

Australian Livestock & Property Agents Association (ALPA)

The Association represents agency businesses across Australia. Collectively this group plays an important role in Livestock, Wool, Merchandise and Rural Property sales.

<http://www.alpa.net.au/>

Australian Livestock Transporters Association (ALTA)

Represents the interests of hundreds of livestock carriers and bulk transporter companies across the country.

<http://www.alta.org.au/>

Australian Meat Processor Corporation Ltd (AMPC)

A national Research and Development Centre, representing all processors active in the red meat processing industry.

<http://www.ampc.com.au/>

International Meat Secretariat (IMS)

A non-profit organisation that brings together meat and livestock organisations throughout the world. The IMS provides a forum for the exchange of ideas and experiences on the issues affecting the international meat and livestock sector, including organising conferences such as the World Meat Congress.

<http://www.meat-ims.org/en/index.php>

National Meat Industry Training Advisory Council Ltd (MINTRAC)

Company owned by the Meat Industry, which represents the industry on training matters. Its role is to improve the skills of workers in the industry through the provision of recognised and accredited training.

<http://www.mintrac.com.au/>

Red Meat Advisory Council (RMAC)

Formed to allow for a single touch-point for the meat industry and the Government when dealing with matters that cut across a number of industry sectors. RMAC comprises a membership of five Peak Industry Councils: CCA, SCA, ALFA, ALEC and AMIC. GICA also maintains a link, but not as a member. RMAC has three principal functions:

1. provide advice to the Minister on cross-sectoral or whole-of-industry matters;
2. act as custodian of the Meat Industry Strategic Plan that is used as a guide for industry programs; and
3. ensure responsible management of a parcel of industry investments, known collectively as 'The Fund', in a manner consistent with an established industry/Government agreement.

<http://www.rmac.com.au/>

Government Bodies

Australian Department of Agriculture, Fisheries and Forestry (DAFF)

DAFF's role is to develop and implement policies and programs that ensure Australia's agricultural, fisheries, food and forestry industries remain competitive, profitable and sustainable.

<http://www.daff.gov.au/>

Australian Bureau of Agricultural and Resource Economics (ABARE)

Australian government economic research agency undertaking independent research and analysis for Australia's agricultural, fishing, forestry, energy and minerals industries.

<http://www.abareconomics.com/>

Australian Quarantine and Inspection Service (AQIS)

Part of DAFF, AQIS manages quarantine controls at our borders to minimise the risk of exotic pests and diseases entering the country. AQIS also provides import and export inspection and certification to help retain Australia's highly favourable animal, plant and human health status and wide access to overseas export markets.

<http://www.aqis.gov.au>

Australian Trade Commission (AUSTRADE)

AUSTRADE is the Australian Government's trade and investment development agency, operating as a statutory agency within the Foreign Affairs and Trade portfolio.

<http://www.austrade.gov.au/>

Biosecurity Australia

Biosecurity Australia is the Australian Government agency that undertakes science-based risk assessments and provides quarantine policy advice to protect Australia's animal and plant health status and natural environment.

<http://www.daff.gov.au/ba>

Bureau of Rural Sciences (BRS)

The BRS is the scientific bureau within DAFF. At the interface between science and policy, BRS is an essential part of the Government's capacity for integrated evidence-based policy development.

<http://www.brs.gov.au/>

Meat Industry Programs

Animal Health Australia (AHA)

A not-for-profit public company established by the Australian, state and territory governments and major national livestock industry organisations.

<http://www.animalhealthaustralia.com.au/>

Australian Meat Industry Language and Standards Committee (AUS-MEAT)

Responsible for establishing and maintaining National Industry Standards for Meat Production and Processing.

<http://www.ausmeat.com/>

CRC for Beef Genetic Technologies (Beef CRC)

A Cooperative Research Centre that aims to improve the profitability and productivity of Australian and global beef businesses through genetic technology.

<http://www.beefcrc.com.au/>

Breedplan

A modern genetic evaluation system for beef cattle breeders based in Australia.

<http://breedplan.une.edu.au/>

EverGraze

EverGraze is developing and testing new farming systems in different environments across the high rainfall zone of southern Australia.

<http://www.evergraze.com.au/>

Sheep Genomics

The Program aims to discover sheep genes and their functions, and to provide new tools to producers that enable them to increase the rate of genetic change in their flocks.

<http://www.sheepgenomics.com/>

Sheep CRC Ltd

A joint venture between Australia's leading sheep research, education and industry organisations that was established in 2002 under the Australian Government's Cooperative Research Centre's Program.

<http://www.sheepcrc.org.au/>

Farm Organisations

National Farmers Federation

Peak national body representing farmers and, more broadly, agriculture across Australia.

<http://www.nff.org.au/>

State Farmer Organisations

AgForce Queensland <http://www.agforceqld.org.au/>

NSW Farmers' Association <http://www.nswfarmers.org.au/>

Victorian Farmers' Federation <http://www.vff.org.au/>

Tasmanian Farmers & Graziers Association <http://www.tfga.com.au/>

South Australian Farmers' Federation <http://www.saff.com.au/>

Pastoralists' & Graziers' Association of WA <http://www.pgaofwa.org.au/>

Western Australian Farmers Federation <http://www.waff.org.au/>

Northern Territory Cattlemen's Association <http://www.ntca.org.au/>